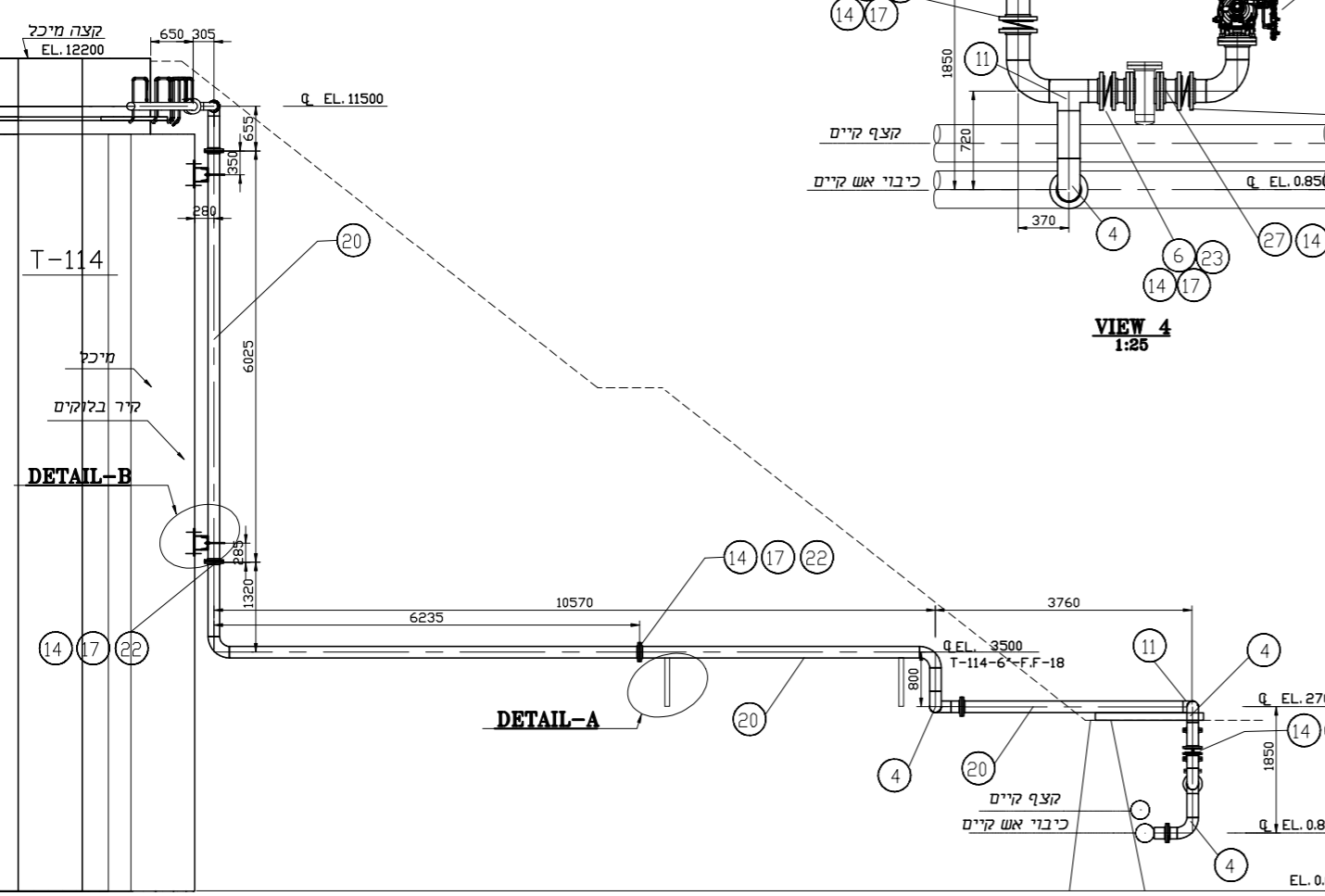


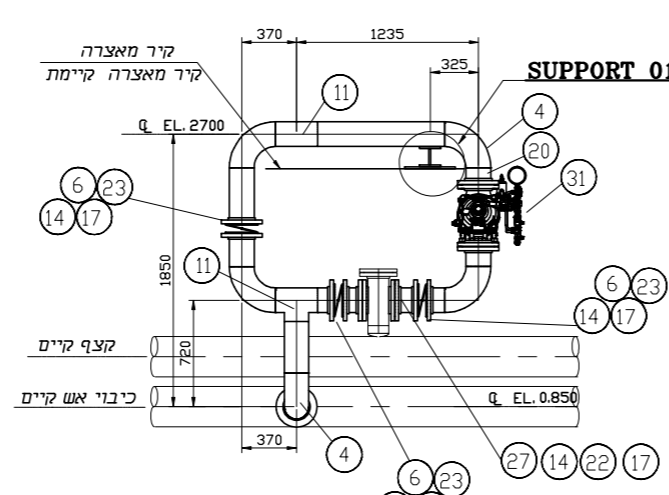
**TOP T-114**  
1:50



**SECTION 1**  
1:50

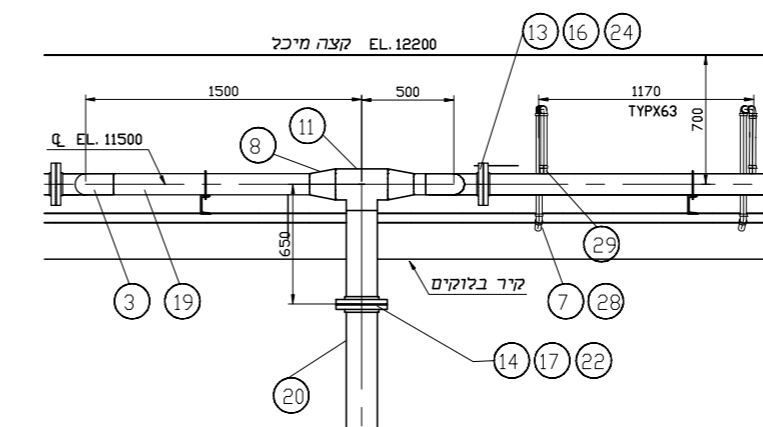
**DETAIL-B**

**DETAIL-A**

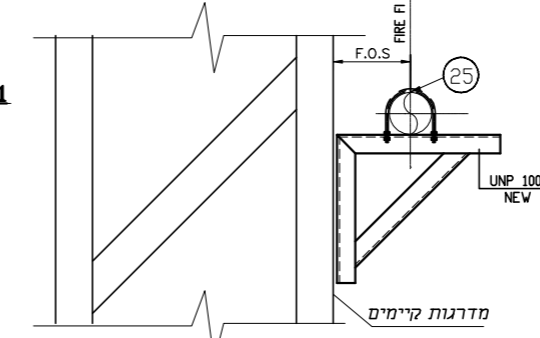


**SUPPORT 01**  
1:25

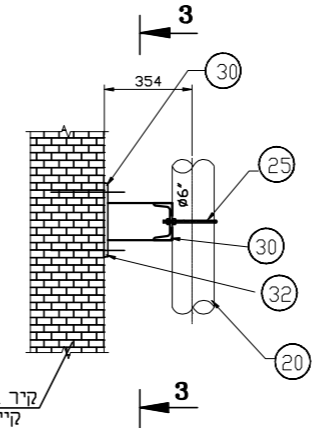
**VIEW 4**  
1:25



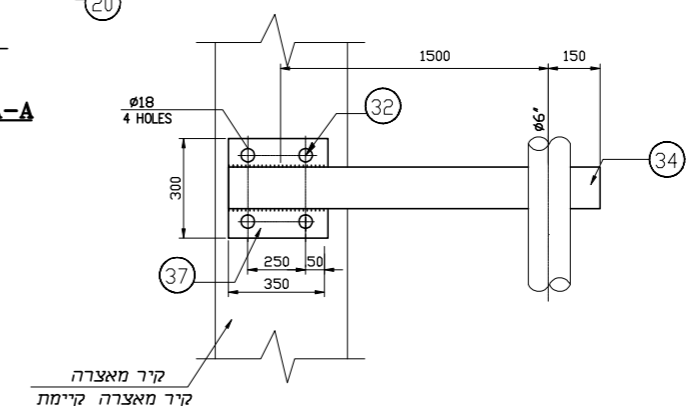
**SECTION 2**  
1:20



**DETAIL-A**  
TYPX2

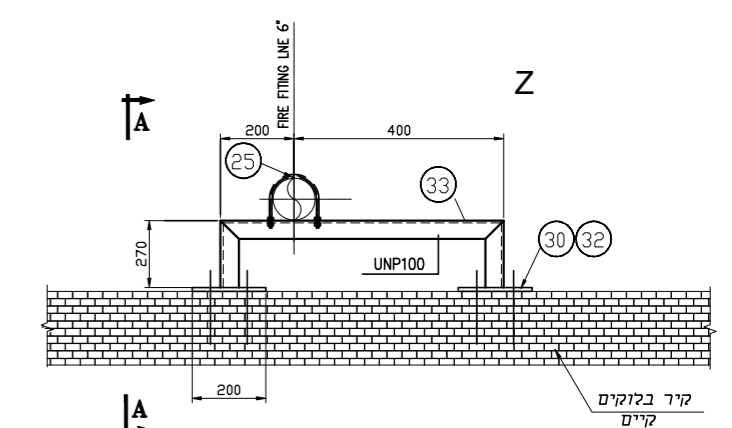


**SECTION A-A**  
N.T.S.

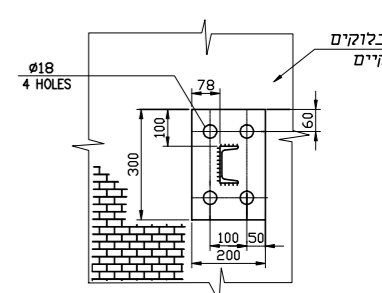


**SUPPORT 01**

MATERIAL LIST				
PART No.	DESCRIPTION	SIZE	QTY.	
1	45 ELBOW NPT 3000LB GALV		1	65
2	90 ELBOW NPT 3000LB GALV		1	130
3	90 LR ELBOW BW SCH 40 A234-WPB		4	14
4	90 LR ELBOW BW SCH 40 A234-WPB		6	8
5	BUTTERFLY VALVE WAFER STYLE 150 LB WITH GEAR OPERATOR		4	2
6	BUTTERFLY VALVE WAFER STYLE 150 LB WITH GEAR OPERATOR		6	3
7	REDUCING COUPLING SCR'D BSP/F 3000# GALV.	1X1/2	65	
8	ECC. REDUCER BW SCH 40 A234-WPB	6X4	2	
9	GATE VALV 150LB RF		3	1
10	TEE REDUCER BW SCH 40 A234-WPB	4X3	1	
11	EQUIL TEE BW SCH 40 A234-WPB		6	3
12	FLANGE WN 150# RF A105		3	1
13	FLANGE SD 150# RF A105		4	40
14	FLANGE SD 150# RF A105		6	16
15	GASKET KLINGERSIL 150# RF 2.5mm C-4430		3	2
16	GASKET KLINGERSIL 150# RF 2.5mm C-4430		4	20
17	GASKET KLINGERSIL 150# RF 2.5mm C-4430		6	15
18	PIPE SEAMLESS TE SCH 40 / GALV		1	150M
19	PIPE SEAMLESS SCH 40 BE A106-Gr.B		4	102M
20	PIPE SEAMLESS SCH 40 BE A106-Gr.B		6	36M
21	STUD BOLTS w/2 NUTS A193-B7 / A194-2H / GALV	5/8X6.5'	16	
22	STUD BOLTS w/2 NUTS A193-B7 / A194-2H / GALV	3/4X4.5'	74	
23	STUD BOLTS w/2 NUTS A193-B7 / A194-2H / GALV	3/4X6.5'	24	
24	STUD BOLTS w/2 NUTS A193-B7 / A194-2H / GALV	5/8X3.75'	160	
25	U BOLT 3/4"x6" GALV +2 NUTS		6	4
26	U BOLT 1/2"x4" GALV +2 NUTS		4	20
27	FIRE LINE BASKET STRAINER 6" 150# SS316		6	1
28	SPRAY NOZZLE TYCD TYPE D3 No 16 K=17.3 ,160deg spray angle		1/2	65
29	HALF COUPLING SCR'D BSPT 3000#		1	65
30	PLATE ST-37.2 10MM 300X200			8
31	DELUGE VALVE FP 6" ANSI 150# RF		6	1
32	BOLT HIT -V RE-500 sd 'HILTY'	M16X155	34	
33	U 100 CHANNEL ST -37			15M
34	HE 100A ST -37			2M
35	Hexagonal nipple 1 inch se npt 3000# galv		1	200
36	Threaded Union 3000# A-105 GALV		1	65
37	PLATE ST-37.2 10MM 300X350			1



**DETAIL-B**  
TYPX2



**SECTION 3**

- הערות:**
- מידות במ"מ.
  - על הקבלן לוודא מידות בשטח לפני ייצור והרכבה.
  - לביצוע ירידות לשטיפה וניקוז יש לסגור את הטבעות באוגן עיזור ולבצע הכנה מוקדמת לביצוע בשטח.
  - גלוון בשטח לאחר גמר ריתוך.
  - יש להשתמש בתמיכות קיימות.
  - המרחק בין הידיות (המותנים) = 1170 (TYPx65)

REV	DATE	DESCRIPTION	BY	CHK	APP'D
0	20.09.18	לביצוע	Y.B.	M.T.	

DES.	R.Y.	5.6.18
DRW.	R.Y.	5.6.18
CKD.	M.T.	5.6.18
APP.CHK.		
APP.D.E.		
APP.CHK.		
APP.		
APP.		

JOB NO	17042	SCALE	1:100	REV.	0	DRAWING NO	17042-114-06-001
DATE	20.09.18	BY	Y.B.	CHK	M.T.	APP'D	